

Laguna Mountain



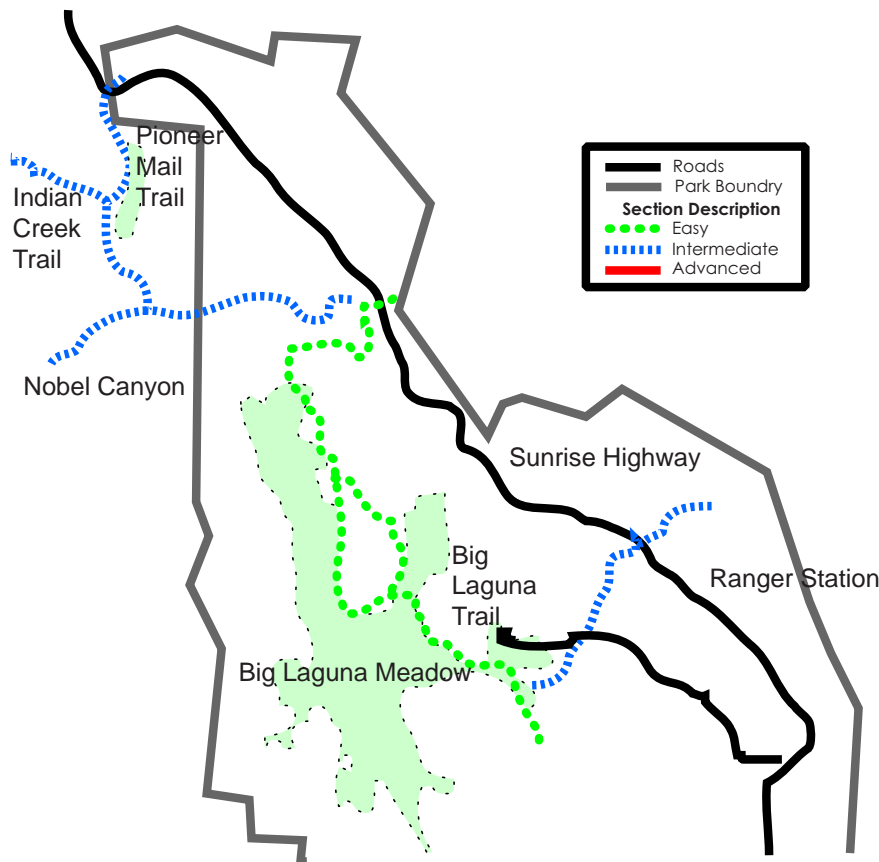
Directions to the Park

From San Diego, Drive east on Interstate 8 approximately 45 minutes to the Sunrise Highway exit. The exit has a sign for the Laguna Mountain Recreation Area. From the exit, go left over the freeway and follow the Sunrise Highway up into the mountains. You will pass through the community of Laguna and several nice camping areas.

If you are just up for the ride follow the Sunrise Highway to the Penny Pines Trailhead. The parking lot is directly past a cattle grate. There are almost always other cars parked here. The Noble Canyon and Big Laguna Trails start from here. For a longer ride continue on to the Pioneer Mail Trailhead.

Best Route:

the best route for the Laguna Mountains is pretty straight forward. . Drive to the Penny Pines Trailhead. From the Trailhead, go 100 yards to the Big Laguna Trail. Follow the trail along the meadow until you reach a fence at Little Laguna (there is no sign). The Big Laguna trail goes across the meadow and continues south. At the other side of this meadow, the trail to the campground joins the trail. Keep following the Big Laguna Trail along the meadow until you come to another fence at a fork in the road. Go through the fence and away from the meadow. This is the section of trail that leads to the Pacific Crest Trail. Follow this trail until it crosses a road. On the other side of the road you will be on a jeep trail for about 1/2 mile. A sign further up indicates where to turn back onto the singletrack again. the singletrack leads to the Sunrise Highway. Cross the highway and continue up until the trail meets the PCT. Turn around here and enjoy your trip back.



Thomas Guide

Location:

430

Information

Number:

476-8547